

By the end of the unit, I will:

Sort and classify a group of items by answering questions

Collect data using tick or tally charts

Take, edit and enhance photographs

Use Google Sheets or Microsoft Excel to produce basic charts

Record information on a digital map

Summarise what has been learned in a presentation

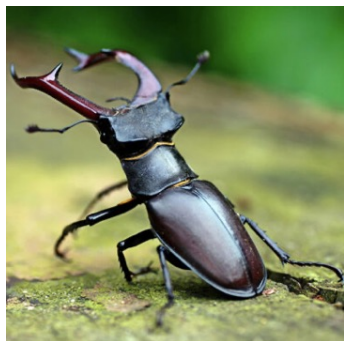
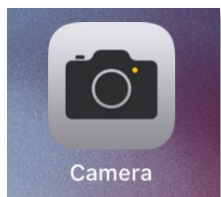
I should already know

How to unlock an iPad.

How to open an app on an iPad.

That digital means being transmitted by a computer.

How to reverse an effect by using the 'undo' button.



Key Vocabulary

Binary	A number system that uses two numbers: 0 and 1; binary questions are questions with yes or no answers
Binary tree	A way of structuring data where each element has no, one or two child elements: a series of yes/no questions to identify an animal can be represented in this way.
Branching Database	Software allowing a series of questions to be created to interactively identify objects
Classification Key	Series of questions (usually of yes/no type) used to identify an animal or plant
Data	Structured information gathered for analysis, often but not always, as numbers
Database	A structured collection of data organised so that groups of records can be identified
Geolocation Data	Latitude and longitude or grid references, which specify the location of something, such as a digital photograph
Global Position System	This system allows a user to determine their exact position using a network of satellites
Pixels	Picture element – one of the small, square dots that makes up a digital image
Tally Charts	Used to count data quickly; you record lines in groups of five